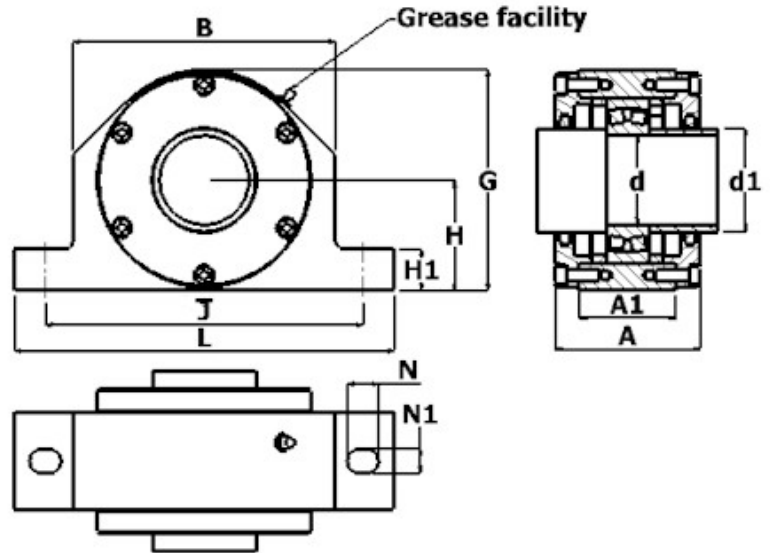
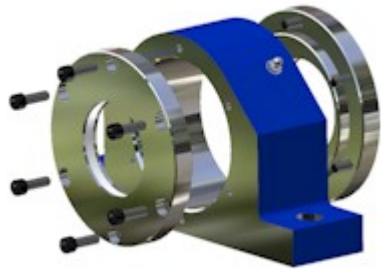


## FLAME CUT STEEL BEARING HOUSINGS.

Fully interchangeable with SN style bearing housings.



Machined to receive parallel bore spherical roller bearings. Can be machined for 2 or 4 bolt fixings.

BRG I/Dia (d)	Shaft Dia (D)	Type	H	J	N1	N	A	L	A1	H1	B	G	Bearing	Locating Rings	
														No	Designation
50	60	FC 210	60	170	15	20	90	205	60	25	120	116	1210	2	FRB 10.5/90
													2210	2	FRB 9/90
													22210	2	FRB 9/90
55	65	FC 211	70	210	18	23	90	255	60	28	160	140	1211	2	FRB 11.5/100
													2211	2	FRB 9.5/100
													22211	2	FRB 9.5/100
60	70	FC 212	70	210	18	23	95	255	65	30	170	140	1212	2	FRB 13/110
													2212	2	FRB 10/1110
													22212	2	FRB 10/110
65	75	FC 213	80	230	18	23	105	275	70	30	190	160	1213	2	FRB 14/120
													2213	2	FRB 10/120
													22213	2	FRB 10/120
75	85	FC 215	80	230	18	23	105	280	70	30	190	160	1215	2	FRB 15.5/130
													2215	2	FRB 12.5/130
													22215	2	FRB 12.5/130
80	90	FC 216	95	260	22	27	110	315	75	32	210	190	1216	2	FRB 16/140
													2216	2	FRB 12.5/140
													22216	2	FRB 12.5/140
85	95	FC 217	95	260	22	27	115	320	85	32	210	190	1217	2	FRB 16.5/150
													2217	2	FRB 12.5/150
													22217	2	FRB 12.5/150
90	100	FC 218	100	290	22	27	130	345	95	35	235	220	1218	2	FRB 17.5/160
													2218	2	FRB 12.5/160
													22218	2	FRB 12.5/160
100	115	FC 220	112	320	26	32	145	380	105	40	260	222	1222	2	FRB 18/180
													2222	2	FRB 12/180
													23222	2	FRB 12/180
110	125	FC 222	125	350	26	32	155	410	110	45	290	250	1224	2	FRB 21/200
													2222	2	FRB 13.5/200
													23224	2	FRB 13.5/200
120	135	FC 224	140	350	26	32	170	410	120	45	120	280	1226	2	FRB 5.1/200
													23226	2	FRB 22/215
													22228	2	FRB 14/215
130	145	FC 226	150	380	28	35	180	445	130	50	320	300	12230	2	FRB 10/215
													23230	2	FRB 15/230
													22232	2	FRB 15/250
140	155	FC 228	150	420	35	42	190	500	135	50	350	305	12232	2	FRB 5/250
													23232	2	FRB 5/250
													22232	2	FRB 5/250
150	165	FC 230	160	450	35	42	200	530	145	60	370	325	1222	2	FRB 16.5/270
													2222	2	FRB 16.5/270
													23222	2	FRB 17/290
160	175	FC 232	170	470	35	42	220	550	160	600	390	345	12222	2	FRB 17/290
													22222	2	FRB 17/290
													23222	2	FRB 5/290