

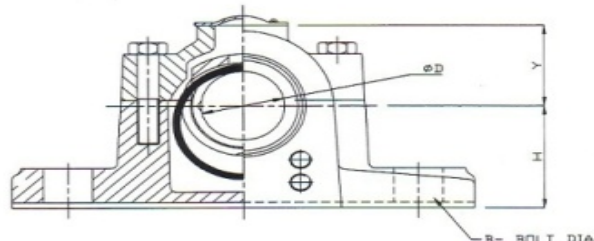
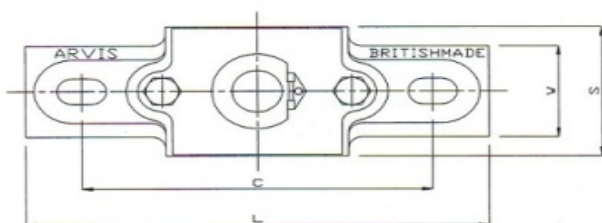
LOOSE RING OILING PLUMMER BLOCKS (RIGID)

Cap Bolts

Sizes 1" to 1 3/4" have 2 cap bolts
 Sizes 2" to 8" have 4 cap bolts

Holding Down Bolts

Sizes 1" to 5 1/2" have 2HD bolts
 Sizes 6" to 8" have 4 HD Bolts



This oil-lubricated plummer block is suitable for higher speeds than grease – lubricated versions. The bottom section of the unit is an oil reservoir and there is a loose oil ring hanging on the shaft which dips into the oil as a shaft rotates. As long as the reservoir is kept filled, oil will be continuously supplied to the bearing.

For ambient temperatures 0° to 30° C use Shell Tellus Oil 37, Shell Rotella X Oil 10W or an equivalent. For ambient temperatures 30° to 60° C use Shell Tellus Oil 68, Shell Rotella X Oil 20/20 or an equivalent.

Note: These units were originally made to inch dimensions. The same castings are used for imperial & metric sizes. Therefore the distances through the metric bore are 2 times the inch size.

D	Order Ref	Mark	Dimensions Inches							B (M/M)	Weight (KGS)
			L	C	CROSS CENTRES	H	Y	W	T		
1	LR16E	A600	6 1/4	4 3/4		1 3/4	1 5/16	1 3/4	3/4	M10	2.0
1 1/4	LR20E	A604	7	5 1/2		2	1 1/2	2 1/8	3/4	M10	3.0
1 1/2	LR24E	A608	8 1/4	6 1/4		2 1/4	1 3/4	2 1/2	7/8	M12	5.0
1	LR28E	A612	9	7		2 1/2	2	2 3/4	7/8	M12	5.8
2	LR32E	A616	10 1/4	7 3/4		2 3/4	2 1/4	3 1/4	1	M16	9
2 1/4	LR36E	A620	10 1/2	8 1/4		3	2 1/2	3 5/8	1 1/8	M16	11
2 1/2	LR40E	A624	12	9 1/4		3 1/4	2 3/4	4	1 1/4	M20	15
2 3/4	LR44E	A628	12 3/4	10		3 1/2	3	4 3/8	1 3/8	M20	19
3	LR48E	A632	13 3/4	11		4	3 1/4	5	1 1/2	M20	28
3 1/4	LR52E	A636	14 3/4	11 1/2		4 1/4	3 1/2	5 3/8	1 5/8	M20	39
3 1/2	LR56E	A640	15 1/2	12		4 1/2	3 3/4	5 3/4	1 3/4	M20	40
4	LR64E	A644	17 1/4	13 1/2		5	4 1/4	6 1/2	2	M24	56
4 1/2	LR72E	A648	17 3/4	13 1/2		5 1/2	4 11/16	7 1/4	2 1/8	M20	78
5	LR80E	A652	20 1/2	16		6	5 3/16	8 1/4	2 1/4	M30	101
5 1/2	LR88E	A656	22 1/4	17 1/2		6 1/2	5 3/4	8 3/4	2 1/2	M30	126
6	LR96E	A660	24	18 1/2	5	7	6 1/4	9 1/2	2 3/4	M30	159
6 1/2	LR140E	A664	27	21	5 1/2	7 1/8	7	10 1/2	3	M30	212
7	LR112E	A668	28	22	5 3/4	8	8 1/8	11 1/2	3 1/8	M30	257
7 1/2	LR120E	A672	30	23 1/2	6	8 1/2	8 1/2	12 1/4	3 1/4	M36	312
8	LR128E	A676	32	25	6 1/2	9	8 1/4	13 1/4	3 1/2	M36	380