

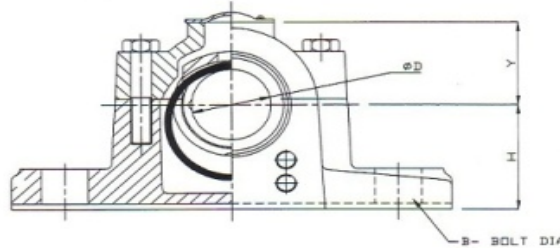
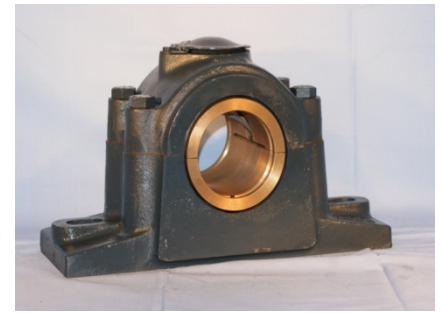
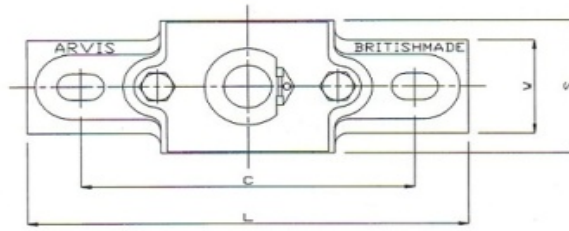
LOOSE RING OILING PLUMMER BLOCKS (RIGID)

Cap Bolts

Sizes 1" to 1 3/4" have 2 cap bolts
 Sizes 2" to 8" have 4 cap bolts

Holding Down Bolts

Sizes 1" to 5 1/2" have 2HD bolts
 Sizes 6" to 8" have 4 HD Bolts



This oil-lubricated plummer block is suitable for higher speeds than grease – lubricated versions. The bottom section of the unit is an oil reservoir and there is a loose oil ring hanging on the shaft which dips into the oil as a shaft rotates. As long as the reservoir is kept filled, oil will be continuously supplied to the bearing.

For ambient temperatures 0° to 30° C use Shell Tellus Oil 37, Shell Rotella X Oil 10W or an equivalent. For ambient temperatures 30° to 60° C use Shell Tellus Oil 68, Shell Rotella X Oil 20/20 or an equivalent.

Note: These units were originally made to inch dimensions. The same castings are used for imperial & metric sizes. Therefore the distances through the metric bore are 2 times the inch size.

D	Order Ref	Mark	Dimensions Inches							B (M/M)	Weight (KGS)
			L	C	CROSS CENTRES	H	Y	W	T		
25	LR25M	A600	160	120		44.5	30	45	19	M10	2.0
30	LR30M	A604	180	140		50.8	35	55	19	M10	3.0
40	LR40M	A608	210	160		57.2	40	65	22	M12	5.0
45	LR45M	A612	230	180		63.5	50	70	22	M12	5.8
50	LR50M	A616	260	195		69.9	55	85	21	M16	9
55	LR55M	A620	265	210		76.2	60	90	30	M16	11
60	LR60M		305	235		82.6	70	100	30	M20	15
65	LR65M	A624									
70	LR70M	A628	325	255		88.9	75	110	35	M20	19
75	LR75M	A632	350	280		101.6	80	125	40	M20	28
80	LR80M										
85	LR85M	A636	375	290		108	85	135	40	M20	39
90	LR90M	A640	395	305		114.3	90	145	45	M20	40
95	LR95M	A644	440	345		127	105	165	50	M24	56
100	LR100M										
110	LR110M	A648	440	345		139.7	120	185	55	M20	78
115	LR115M										
125	LR125M	A652	520	405		152.4	130	210	60	M30	101
140	LR140M	A656	565	445		165.1	145	225	65	M30	126
150	LR150M	A660	610	470	125	177.8	160	240	65	M30	159
160	LR160M										
165	LR165M	A664	685	535	140	190.5	170	265	75	M30	212
170	LR170M										
180	LR180M	A668	714	560	145	203.2	180	290	80	M30	257
190	LR190M	A672	760	595	150	215.9	195	310	85	M36	312
200	LR200M	A676	810	635	165	228.6	210	335	90	M36	380