

**ANGULAR PATTERN NON SELF OILING PLUMMER BLOCKS**

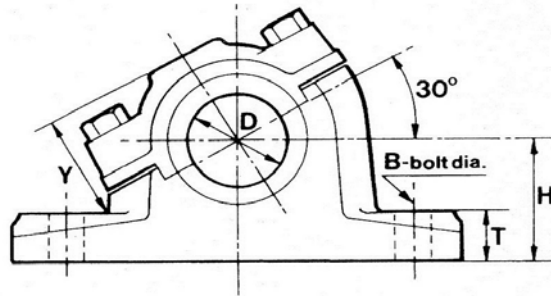
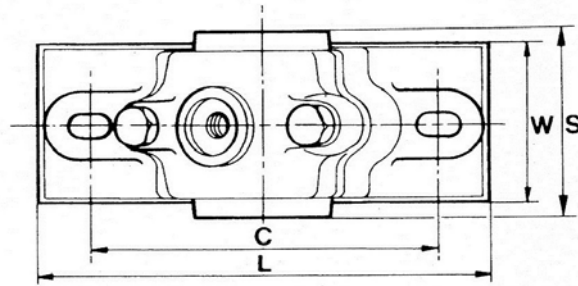
**Cap Bolts**

Sizes 1" to 4" have 2 cap bolts.  
 Sizes 5 "to 8" have 4 cap bolts

**Holding Down Bolts**

Sizes 1" to 5 ½ "have 2HD bolts  
 Sizes 6" to 8" have 4 HD Bolts  
 Grease nipples supplied.

Angular Pattern 1 ½ and 2 diameters through (dimensions S)



**Note:** These units were originally made to inch dimensions. The same castings are used for imperial & metric sizes and the '1 ½ times' and '2 times' rule applies only to the inch dimensions. Therefore, the distances through the metric bore sizes are 1 ½ or 2 times the inch size.

D Inch	Order Ref		Dimensions Inches										Weight (KGS)		BSP Grease Nipple
	1 ½ DIA	2 DIA	L	C	CROSSCENTRES when S is		H	Y	W when S is		T	B (M/M)	1 ½ DIA	2 DIA	
					1 ½ DIA	2 DIA			1 ½ DIA	2 DIA					
1	NS16E1A	NS16E2A	6 ¼	4 ¾			1 ¾	1 ¼	1 ¼	1 ¾	¾	M10	1.4	2.0	1/8"
1 ¼	NS20E1A	NS20E2A	7	5 ½			2	1 7/16	1 ½	2 1/8	¾	M10	2.1	2.7	
1 ½	NS24E1A	NS24E2A	8 ¼	6 ¼			2 ¼	1 5/8	1 ¾	2 ½	7/8	M12	3.3	4.9	
1 ¾	NS28E1A	NS28E2A	9	7			2 ½	1 7/8	2	2 ¾	7/8	M12	5.4	6.4	
2	NS32E1A	NS32E2A	10 ¼	7 ¾			2 ¾	2 1/8	2 ¼	3 ¼	1	M16	6.9	9.3	¼"
2 ¼	NS36E1A	NS36E2A	10 ½	8 ¼			3	2 3/8	2 5/8	3 5/8	1 1/8	M16	11.1	13.0	
2 ½	NS40E1A	NS40E2A	12	9 ¼			3 ¼	2 9/16	3	4	1 ¼	M20	12.5	16.4	
2 ¾	NS44E1A	NS44E2A	12 ¾	10			3 ½	2 13/16	3 ¼	4 3/8	1 3/8	M20	17.5	20.5	
3	NS48E1A	NS48E2A	13 ¾	11			4	3 1/16	3 ½	5	1 ½	M20	20.1	25.7	
3 ¼	NS52E1A	NS52E2A	14 ¾	11 ½			4 ¼	3 5/16	3 ¾	5 3/8	1 5/8	M20	25.2	35.1	
3 ½	NS56E1A	NS56E2A	15 ½	12			4 ½	3 9/16	4	5 ¾	1 ¾	M20	29.4	42.1	3/8"
4	NS64E1A	NS64E2A	17 ¼	13 ½			5	4 3/16	4 ½	6 ½	2	M24	42	59	
4 ½	NS72E1A	NS72E2A	19 ¾	15 ½			5 ½	4 ½	5 ¼	7 ¼	2 1/8	M30	62	83	
5	NS80E1A	NS80E2A	20 ½	16			6	5	6	8 ¼	2 ¼	M30	84	106	
5 ½	NS88E1A	NS88E2A	22 ¼	17 ½			6 ½	5 ¼	6 ½	8 ¾	2 ½	M30	108	133	2 X 3/8"
6	NS96E1A	NS96E2A	24	18 ½	3 ½	5	7	5 ¾	7	9 ½	2 5/8	M30	132	168	
6 ½	NS104E1A	NS104E2A	27	21	3 ¾	5 ½	7 ½	6 ½	7 ¾	10 ½	3	M30	180	225	
7	NS112E1A	NS112E2A	28	22	4	5 ¾	8	7 3/8	8	11 ½	3 1/8	M30	210	270	
7 ½	NS120E1A	NS120E1A	30	23 ½	4 ¼	6	8 ½	7 5/8	8 ½	12 ¼	3 ¼	M36	246	327	2 X 3/8"
8	NS128E1A	NS128E2A	32	25	4 ½	6 ½	9	8 1/8	9 ¼	13 ¼	3 ½	M36	294	401	