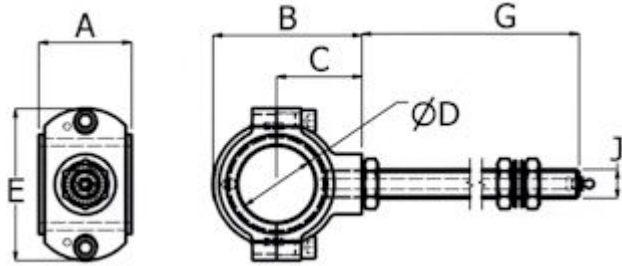


SG IRON HANGER UNITS WITH SPLIT GUNMETAL SHELLS

Heavy duty split SG housing with a split gunmetal bush.

The unit comes complete with threaded rod, locknuts and grease nipple. Sealed versions can be supplied and non metallic bushes are available to order.

The split shells are replaceable.



Customised versions of these units can be supplied- Specials made to order.

| D mm | Part No | Mark | B | C | A | E | G | J | Weight Kg |
|--------|---------|--------|-------|-------|--------|-------|-----|--------|-----------|
| 60 mm | HB60M L | HBL4 | 122 | 70 | 76.2 | 126 | 254 | M24 | 3.5 |
| 65 mm | HB65M L | | | | | | | | |
| 70 mm | HB70M L | HBL5 | 142.5 | 79 | 82.6 | 142 | 254 | M24 | 6.5 |
| 75 mm | HB75M L | | | | | | | | |
| 80 mm | HB80M | A814/5 | 149 | 98.4 | 101.68 | 165.1 | 254 | 1" BSW | 10.5 |
| 90 mm | HB90M | | | | | | | | |
| 100 mm | HB100M | A817/8 | 190.5 | 114.3 | 114.3 | 177.8 | 254 | 1" BSW | 15 |

| D Inch | Part No | Mark | B | C | A | E | G | J | Weight Kg |
|--------|--------------|--------|-------|-------|--------|-------|-----|--------|-----------|
| 2" | HB32E(40E) L | HBL4 | 4.80 | 2.75 | 3.00 | 4.96 | 10 | M24 | 6.5 |
| 2 1/4" | HB36E(40E) L | | | | | | | | |
| 2 3/8" | HB38E L | | | | | | | | |
| 2 1/2" | HB40E L | | | | | | | | |
| 2 5/8" | HB42E L | | | | | | | | |
| 2 3/4" | HB44E L | HBL5 | 5.625 | 3.125 | 3.250 | 5.59 | 10 | M24 | 6.5 |
| 3" | HB48E L | | | | | | | | |
| 3 1/4" | HB52E | A814/5 | 149 | 98.4 | 101.68 | 165.1 | 254 | 1" BSW | 10.5 |
| 3 1/2" | HB56E | | | | | | | | |
| 4" | HB64E | A817/8 | 190.5 | 114.3 | 114.3 | 177.8 | 254 | 1"BSW | 15 |

Items with mark A814/5: A817/8 in this colour are Steel housings.